

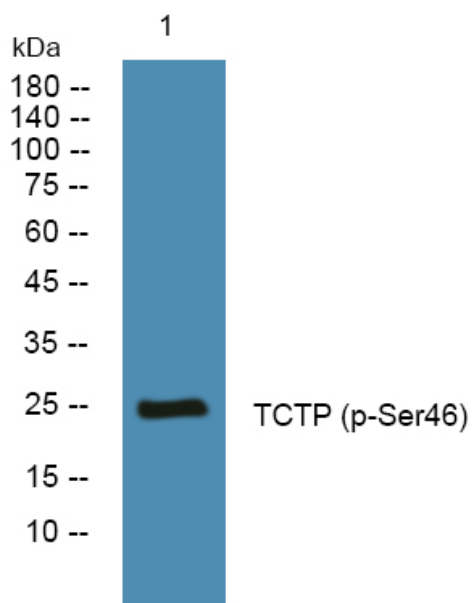


# TCTP (phospho-Ser46) rabbit pAb

<b>Catalog No</b>	YP-Ab-03646
<b>Isotype</b>	IgG
<b>Reactivity</b>	Human;Mouse;Rat
<b>Applications</b>	WB
<b>Gene Name</b>	TPT1
<b>Protein Name</b>	TCTP (Ser46)
<b>Immunogen</b>	Synthesized phosho peptide around human TCTP (Ser46)
<b>Specificity</b>	This antibody detects endogenous levels of Human Mouse Rat TCTP (phospho-Ser46)
<b>Formulation</b>	Liquid in PBS containing 50% glycerol, 0.5% BSA and 0.02% sodium azide.
<b>Source</b>	Polyclonal, Rabbit,IgG
<b>Purification</b>	The antibody was affinity-purified from rabbit serum by affinity-chromatography using specific immunogen.
<b>Dilution</b>	WB 1:1000-2000
<b>Concentration</b>	1 mg/ml
<b>Purity</b>	≥90%
<b>Storage Stability</b>	-20°C/1 year
<b>Synonyms</b>	Translationally-controlled tumor protein (TCTP) (Fortilin) (Histamine-releasing factor) (HRF) (p23)
<b>Observed Band</b>	24kD
<b>Cell Pathway</b>	Cytoplasm .
<b>Tissue Specificity</b>	Found in several healthy and tumoral cells including erythrocytes, hepatocytes, macrophages, platelets, keratinocytes, erythroleukemia cells, gliomas, melanomas, hepatoblastomas, and lymphomas. It cannot be detected in kidney and renal cell carcinoma (RCC). Expressed in placenta and prostate.
<b>Function</b>	function:Involved in calcium binding and microtubule stabilization.,similarity:Belongs to the TCTP family.,subunit:Interacts with STEAP3.,tissue specificity:Found in several healthy and tumoral cells including erythrocytes, hepatocytes, macrophages, platelets, keratinocytes, erythroleukemia cells, gliomas, melanomas, hepatoblastomas, and lymphomas. It cannot be detected in kidney and renal cell carcinoma (RCC). Expressed in placenta and prostate.,
<b>Background</b>	
<b>matters needing attention</b>	Avoid repeated freezing and thawing!

**Usage suggestions**

This product can be used in immunological reaction related experiments. For more information, please consult technical personnel.

**Products Images**

Western blot analysis of lysates from KB cells, primary antibody was diluted at 1:1000, 4° over night